



# ENVIRONMENTAL PRODUCT DECLARATION

**EN**

In accordance with  
ISO 14025:2006 and  
EN 15804:2012+A2:2019/AC:2021 for:

**STAINLESS STEEL  
COLD DRAWN BAR & REBAR**

from  
**Marcegaglia Stainless Sheffield Ltd**

**Programme:**

The International EPD® System  
[www.environdec.com](http://www.environdec.com)

**Programme operator:**

EPD International AB

**EPD registration number:**

S-P-12333

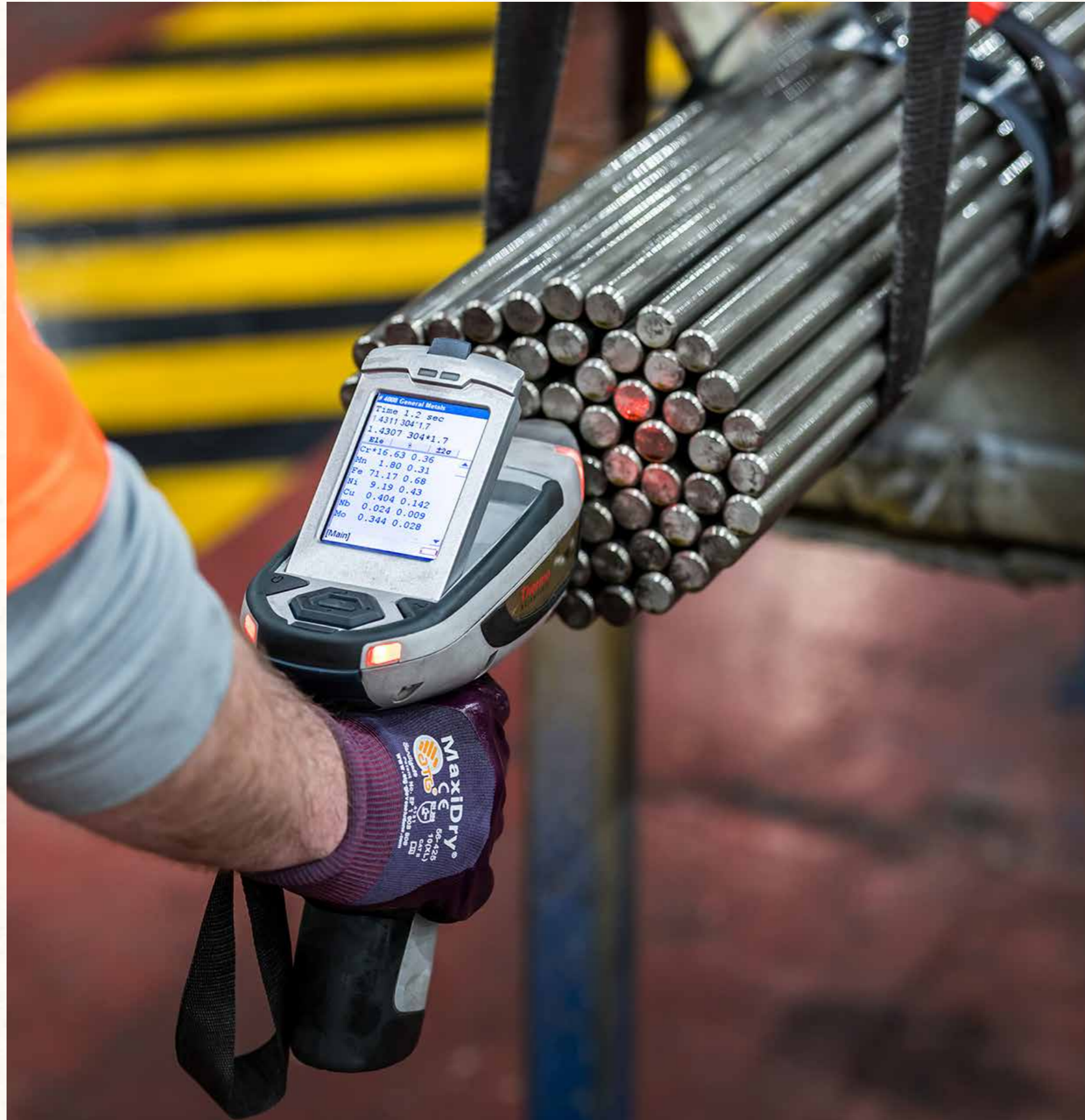
**Date of publication:**

2024-01-11

**Valid to:**

2029-01-11

*An EPD should provide current information and may be updated if conditions change. The stated validity is therefore subject to the continued registration and publication at [www.environdec.com](http://www.environdec.com)*



## General information 5

Programme information	5	Information on the LCA	7
Company information	6	Bar cold drawing	8
Product information	6		

## Other information 9

Description of the main activities	9	Modules declared	11
Allocation rules	9		

## Results of the environmental performance indicators 12

Potential environmental impacts	12	Output flow	13
Resource use	13	Stainless Steel Cold Drawn Bar/Rebar	14
Waste production	13		

## Additional environmental information 15

Content information for tonne of product	15	Interpretation of the results	16
--	----	-------------------------------	----

## References 18



## General information

### PROGRAMME INFORMATION

<b>Programme:</b>	The International EPD® System
<b>Address:</b>	EPD International AB Box 210 60 SE-100 31 Stockholm Sweden
<b>Website:</b>	<a href="http://www.environdec.com">www.environdec.com</a>
<b>E-mail:</b>	<a href="mailto:info@environdec.com">info@environdec.com</a>

### Accountabilities for PCR, LCA and independent, third-party verification

#### Product Category Rules (PCR)

CEN standard EN 15804 serves as the Core Product Category Rules (PCR)

Product Category Rules (PCR): *Constructions products, 2019:14, version 1.3.2, UN CPC code 412*

PCR review was conducted by: *The Technical Committee of the International EPD® System. Review chair: No chair appointed- Contact via the Secretariat [www.environdec.com/contact](http://www.environdec.com/contact)*

#### Life Cycle Assessment (LCA)

LCA accountability: MADE HSE S.r.l.

#### Third-party verification

Independent third-party verification of the declaration and data, according to ISO 14025:2006, via:

EPD verification by accredited certification body

Third-party verification: *Bureau Veritas is an approved certification body accountable for the third-party verification*

The certification body is accredited by: *Accredia*

Procedure for follow-up of data during EPD validity involves third party verifier:

Yes  No

The EPD owner has the sole ownership, liability, and responsibility for the EPD.

EPDs within the same product category but registered in different EPD programmes, or not compliant with EN 15804, may not be comparable. For two EPDs to be comparable, they must be based on the same PCR (including the same version number) or be based on fully-aligned PCRs or versions of PCRs; cover products with identical functions, technical performances and use (e.g. identical declared/functional units); have equivalent system boundaries and descriptions of data; apply equivalent data quality requirements, methods of data collection, and allocation methods; apply identical cut-off rules and impact assessment methods (including the same version of characterisation factors); have equivalent content declarations; and be valid at the time of comparison. For further information about comparability, see EN 15804 and ISO 14025.

## COMPANY INFORMATION

**Owner of the EPD:**  
Marcegaglia Stainless Sheffield Ltd

**Contacts:**  
To obtain more information about this product declaration and / or its configurations, the following references are available:

Mail: [ben.lunn@stainless-marcegaglia.com](mailto:ben.lunn@stainless-marcegaglia.com)  
Tel.: +44 114 261 5226

**Description of the organisation:**  
Marcegaglia is a leading industrial group in the international steel sector, which has been processing steel for over sixty years.

The Group is the world's leading independent steel processor with a product range that covers everything from carbon to stainless steel, from long to flat products, from commodity to specialty.

**Product-related or management system-related certifications:**

- Quality management system compliant with the requirements of the standard BS EN ISO 9001:2015 (certificate n° GB01982/01 issued by TÜV UK Ltd);
- Environmental management system compliant with the requirements of the standard BS EN ISO 14001:2015 (certificate n° GB01982/01 issued by TÜV UK Ltd);
- Health and safety management system compliant with the requirements of the standard BS ISO 45001:2018 (certificate n° GB01982/01 issued by TÜV UK Ltd).

**Name and location of the production site:**  
SSB (Stainless Steel Rods): Europa Link, Tinsley, Sheffield S9 1TZ, United Kingdom.

## PRODUCT INFORMATION

**Product name:**  
Stainless steel cold drawn bar & rebar;

**Product identification:**  
Stainless steel cold drawn bar & rebar;

**Product description:**  
Hot Rolled & Pickled Stainless Steel Coils in either Round, Square, Hexagon or Rebar are obtained. Rounds, Squares and Hexagons are cold drawn, straightened and cut to

length though a combined drawing line. Stainless Steel Rebar is straightened and either cut into lengths or bent and cut into desired shapes.

**UN CPC code**  
412 Products of iron or steel

**Geographical scope**  
Worldwide

## INFORMATION ON THE LCA

**Functional unit / declared unit:**  
The functional unit of the considered system is the tonne of cold drawn bar and rebar produced.

**Reference service life:**  
For the products under study it is not possible to quantify the exact useful life as much also depends on their future use. However, it is emphasized that even when the deadline is reached, the product can be recycled and reused again to generate other raw materials.

**Time representativeness:**  
The data used are representative of the year 2022.

**Database(s) and LCA software used:**  
Ecoinvent database v.3.9.1, January 2023 / Software used SimaPro rel. 9.5.0.0.

**Description of system boundaries:**  
The study is “Cradle to gate with modules C1 – C4 and module D (A1 – A3 + C + D)” (reference: PCR 2019: 14 vers. 1.3.2 valid until 20-12-2024).

Modules A1-A3 include material procurement processes (raw and auxiliary materials) as well as manufacturing processes.

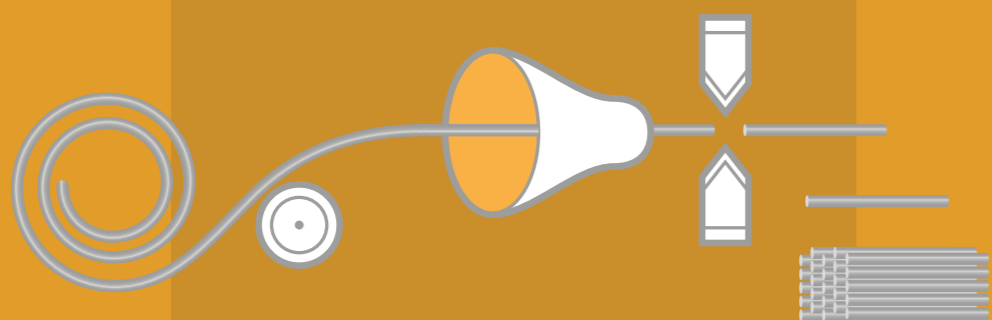
Modules C1-C4 consider the deconstruction, transport, sorting and disposal of components deriving from the end-of-life operations of the product. These operations cannot be controlled directly by the company: in this regard, data from the literature relating to the building sector are therefore used.

- It is considered:
- an average consumption of diesel equivalent to 121 MJ for each ton of material demolished;
  - an average distance of 80 km to transport the material to the recovery center;
  - an average consumption of electricity equal to 28 kWh for each ton of material sorted.

Furthermore, it is assumed that 99% of the material delivered to the treatment center is recoverable. The remaining percentage (1%) is destined for landfill.

Module D considers the recovery and recycling potential of steel deriving from end-of-life processes: the calculation of the environmental benefits deriving from the recovery of steel is based on the indications provided by the document “Product Category Rules for Type III environmental product declaration of construction products to EN 15804: 2012 - Par. 6.3.4.6. Benefits and loads beyond the product system boundary, information Module D “. It should be noted that, in line with what is indicated in the “Life Cycle inventory (LCI) study” of the World Steel Association - May 2021, that the quantity of steel destined for recycling is equal to 85%.

## BAR COLD DRAWING



COLD DRAWING

INSPECTION AND  
PACKING

## Other information

### DESCRIPTION OF THE MAIN ACTIVITIES

For Cold Drawn Bar, Stainless Steel coils are first passed through a pre-drawing coating process. This applies coating to the coils which enables the lubricating oil to adhere to the bar during cold drawing.

Once the coils have been coated, the coils are fed into a combined drawing line, during this process the coil is straightened and pulled through a tungsten carbide die which reduces the diameter by 0.5mm to 1.5mm to

improve mechanical properties and improve the surface finish. The cold drawn rod is then cut to length and packaged to customer requirements.

For Rebar, Stainless Steel coils are fed into Rebar Cut and Bending machines, where the Coil is de-spooled and straightened and is either cut into lengths or bent and cut into desired shapes.

### ALLOCATION RULES

“Allocation” means the “distribution of pollutant flows to the various products and by-products leaving the supply chain considered according to parameters chosen on a more or less subjective basis (mass, energy value, economic value, etc.)”.

The concept of allocation is a fundamental point of LCA and is linked to the fact that it is practically impossible to analyze a system, referring the available data to each individual activity. For this reason, a phase of subdivision (allocation) of the latter is necessary according to the desired parameters.

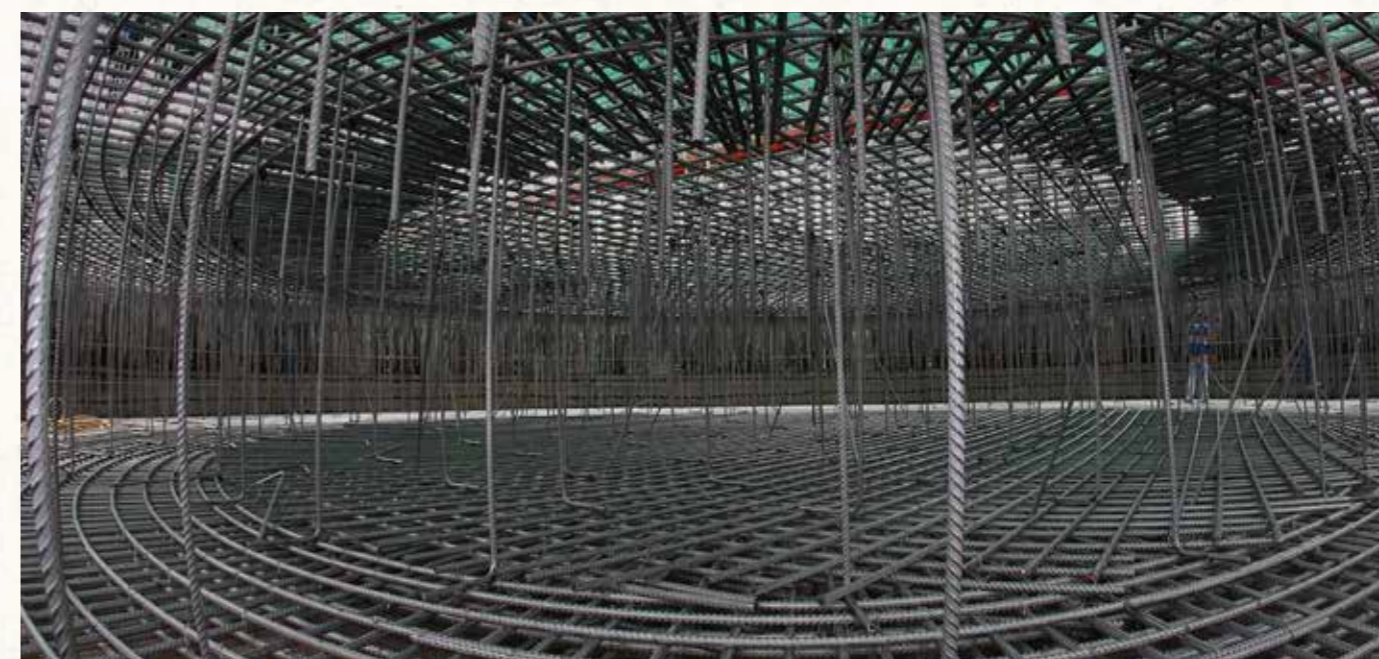


### MODULES DECLARED

Modules declared, geographical scope, share of specific data (in GWP-GHG results) and data variation (in GWP-GHG results):

Module	A1-A3 Product stage			A4-A5 Construction process stage		B1-B7 Use stage							C1-C4 End of life stage				D Benefits and loads beyond the system boundary
	Raw material supply	Transport	Manufacturing	Transport	Construction installation	Use	Maintenance	Repair	Replacement	Refurbishment	Operational energy use	Operational water use	De-construction demolition	Transport	Waste processing	Disposal	Reuse-Recovery-Recycling-potential
Module	A1	A2	A3	A4	A5	B1	B2	B3	B4	B5	B6	B7	C1	C2	C3	C4	D
Modules declared	X	X	X	ND	ND	ND	ND	ND	ND	ND	ND	ND	X	X	X	X	X
Geography	GLO	GLO	GB	-	-	-	-	-	-	-	-	-	GLO	GLO	GLO	GLO	GLO
Specific data	> 90%			-	-	-	-	-	-	-	-	-	-	-	-	-	-
Variations-product	Not relevant			-	-	-	-	-	-	-	-	-	-	-	-	-	-
Variation-site	Not relevant			-	-	-	-	-	-	-	-	-	-	-	-	-	-

X = Module considered;  
 ND = Module not declared;  
 GLO = Global;  
 GB = Great Britain.



## Results of the environmental performance indicators

The environmental performance indicators refer to 1 tonne of stainless steel cold drawn bar/rebar.

### POTENTIAL ENVIRONMENTAL IMPACTS

Impact category	Abb.	Unit
Climate change - total	GWP - t	kg CO <sub>2</sub> eq
Ozone depletion	ODP	kg CFC11 eq
Climate change - Fossil	GWP - fossil	kg CO <sub>2</sub> eq
Climate change - Biogenic	GWP - biogenic	kg CO <sub>2</sub> eq
Climate change - Land use and LU change	GWP - luluc	kg CO <sub>2</sub> eq
Climate change - Greenhouse Gases	GWP - GHG	kg CO <sub>2</sub> eq
Photochemical ozone formation	POCP	kg NMVOC eq
Acidification of land and water	AP	mol H+ eq
Eutrophication	EP - freshwater	kg P eq
	EP - marine	kg N eq
	EP - terrestrial	mol N eq
Water use	WDP	m <sup>3</sup> depriv.
Resource use, fossils	ADP - F	MJ
Resource use, minerals and metals	ADP - MM	kg Sb eq



### RESOURCE USE

Impact category	Abb.	Unit
Use of renewable primary energy excluding renewable primary energy resources used as raw materials	PERE	MJ
Use of renewable primary energy resources used as raw materials	PERM	MJ
Total use of renewable primary energy resources (primary energy and primary energy resources used as raw materials)	PERT	MJ
Use of non-renewable primary energy excluding non-renewable primary energy resources used as raw materials	PENRE	MJ
Use of non-renewable primary energy resources used as raw materials	PENRM	MJ
Total use of non-renewable primary energy resources (primary energy and primary energy resources used as raw materials)	PENRT	MJ
Use of secondary material	SM	kg
Use of renewable secondary fuels	RSF	MJ
Use of non-renewable secondary fuels	NRSF	MJ
Use of net fresh water	FW	m <sup>3</sup>

### WASTE PRODUCTION

Impact category	Abb.	Unit
Hazardous waste disposed	HW	kg
Non-hazardous waste disposed	NHW	kg
Radioactive waste disposed	RW	kg

### OUTPUT FLOW

Impact category	Abb.	Unit
Reuse	REUSE	kg
Materials for recycling	RECYCLE	kg
Materials for energy recovery	EN-REC	kg
Exported energy-electricity	EE-E	MJ
Exported energy-thermal energy	EE-T	MJ

STAINLESS STEEL COLD DRAWN BAR/REBAR

Abb.	Unit	A1-A3	C1-C4	D
GWP - t	kg CO <sub>2</sub> eq	3,561E+03	3,299E+01	-8,707E+02
GWP - fossil	kg CO <sub>2</sub> eq	3,550E+03	3,298E+01	-8,589E+02
GWP - biogenic	kg CO <sub>2</sub> eq	9,005E+00	5,992E-03	-1,095E+01
GWP - luluc	kg CO <sub>2</sub> eq	2,126E+00	6,664E-03	-8,653E-01
GWP - GHG	kg CO <sub>2</sub> eq	3,563E+03	3,304E+01	-8,628E+02
ODP	kg CFC-11 eq	7,725E-05	9,637E-07	-9,479E-06
POCP	kg NMVOC eq	1,271E+01	2,361E-01	-3,131E+00
AP	mol H+ eq	1,577E+01	1,681E-01	-4,927E+00
EP - freshwater	kg P eq	8,543E-01	1,703E-03	-3,157E-01
EP - marine	kg N eq	3,213E+00	6,921E-02	-8,665E-01
EP - terrestrial	mol N eq	3,458E+01	7,464E-01	-9,147E+00
WDP	m <sup>3</sup> depriv.	1,061E+03	1,346E+00	-1,783E+02
ADP - F	MJ	4,748E+04	5,543E+02	-9,926E+03
ADP - MM	kg Sb eq	8,684E-02	3,377E-05	-2,345E-02
PERE	MJ	4,872E+03	1,195E+01	-2,966E+03
PERM	MJ	0,000E+00	0,000E+00	0,000E+00
PERT	MJ	4,872E+03	1,195E+01	-2,966E+03
PENRE	MJ	4,731E+04	4,785E+02	-1,126E+04
PENRM	MJ	0,000E+00	0,000E+00	0,000E+00
PENRT	MJ	4,731E+04	4,785E+02	-1,126E+04
SM	kg	1,087E+01	1,368E-01	-1,043E+02
RSF	MJ	0,000E+00	0,000E+00	0,000E+00
NRSF	MJ	0,000E+00	0,000E+00	0,000E+00
FW	m <sup>3</sup>	2,305E+01	1,077E-01	-4,126E+00
HW	kg	2,734E+02	3,688E-01	-1,114E+02
NHW	kg	9,119E+02	2,221E+01	-3,687E+02
RW	kg	1,572E+00	1,935E-02	-2,058E-01
REUSE	kg	0,000E+00	0,000E+00	0,000E+00
RECYCLE	kg	6,076E+02	0,000E+00	0,000E+00
EN-REC	kg	0,000E+00	0,000E+00	0,000E+00
EE-E	MJ	0,000E+00	0,000E+00	0,000E+00
EE-T	MJ	0,000E+00	0,000E+00	0,000E+00

Additional environmental information

CONTENT INFORMATION FOR TONNE OF PRODUCT

Product components	Weight-t	Post-consumer material, weight-%	Biogenic material, weight-% and kg C/kg
Chromium	maximum 0.30	-	-
Nickel	maximum 0.38	-	-
Molybdenum	maximum 0.11	-	-
Carbon	maximum 0.012	-	-
Iron	balance	-	-
<b>TOTAL</b>	<b>1</b>	<b>77</b>	<b>-</b>

Packaging materials	Weight-t	Weight-% (versus the product)	Weight biogenic carbon, kg C/kg
Plastic	0.000248	0.0248	-

The materials used for the packaging of the final products consist of plastic bags and straps. The quantities of these packaging compared to one ton of final product identify a value of less than 1%.

The products do not contain hazardous substances from the SVHC Candidate List for Authorization in quantities greater than 0,1%.





**INTERPRETATION OF THE RESULTS**

The raw material purchased by Marcegaglia Stainless Sheffield Ltd, understood as the mix of metal scrap and ferroalloys, is characterized by a recycled content of 77%: this percentage is calculated as a weighted average of the same value associated with the incoming raw material.

The energy mix is modeled considering the British residual electricity mix: the data are reported in the study published by AIB "European Residual Mixes - Results of the calculation of Residual Mixes for the calendar year 2022 - version 1.0, 2023-06-01".

Energy Sources		Value [%]
Renewable	Biomass	0.68
	Solar	2.80
	Wind	0.39
Nuclear	-	23.02
Fossil	Hard coal	2.71
	Oil	1.01
	Gas	65.24
	Unspecified	4.15
<b>CO2 emissions [kgCO2/kWh]</b>		<b>0.365</b>

It should be noted that at the end of its useful life, the product is destined for recycling. In particular, the amount of steel destined for recycling is 85% in line with what is indicated in the "Life Cycle inventory (LCI) study" of the World Steel Association - May 2021.

Considering that the raw material contains a percentage of recycled material equal to 77%, this equivalent quantity is not considered in determining the value of the potentially recoverable steel.

The final result is mainly influenced by the types of raw materials arriving at the plant, and in particular by elements such as scrap, ferronickel and ferrochrome. The contribution determined by the energy used on the site (in particular electricity) is also not negligible. The impact caused by the transport of the raw material is insignificant.



Stainless steel cold drawn bar & rebar

## References

- General Programme Instructions of the International EPD® System. Version 4.0;  
 PCR 2019:14 - Version 1.3.2 "CONSTRUCTION PRODUCTS" - Date 2023-12-08;  
 BRE "Global Product Category Rules (PCR) For Type III EPD of Construction Products to EN 15804+A2" PN 514 Rev 3.0;  
 Ecoinvent database v.3.9.1 - January 2023;  
 UNI EN ISO 14025: 2010 "Environmental labels and declarations - Type III environmental declarations - Principles and procedures";  
 UNI EN ISO 14040: 2021 "Environmental management - Life cycle assessment - Principles and framework";  
 UNI EN ISO 14044:2021 "Environmental management - Life cycle assessment - Requirements and guidelines";  
 UNI EN ISO 15804:2021 "Sustainability of buildings - Environmental product declarations - Development framework rules by product category";  
 Association of Issuing Bodies - AIB "European Residual Mixes - Results of the calculation of Residual Mixes for the calendar year 2022" - version 1.0, 2023-06-31;  
 CSIRO "Metal recycling: The need for a life cycle approach" - May 2013;  
 World Steel Association "Life Cycle inventory (LCI) study" - May 2021.





Europa Link, Tinsley,  
Sheffield S9 1TZ,  
United Kingdom  
Phone +44 114 261 5200  
info@marcegaglia.com  
www.marcegaglia.com



THE INTERNATIONAL EPD® SYSTEM

[www.evirondec.com](http://www.evirondec.com)